

PLEASE JOIN US FOR OUR
2ND ANNUAL FUNDRAISER
to benefit the International Rett Syndrome Foundation

BOILIN' GOOD TIME

THE HOTTEST EVENT IN TOWN!

University of Richmond's Jepson Alumni Center
February 27, 2009 • 7:00 p.m.

TICKETS: \$200 per couple, \$100 single
CASUAL DRESS • RSVP BY FEBRUARY 19, 2009

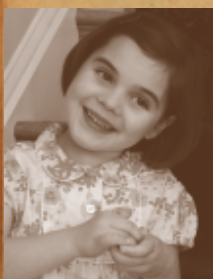
Tickets available at www.rettsyndrome.org. For more information, call 225-810-3687.

THANK YOU to our generous sponsors:



Kathryn & Luke Kissam • Valerie & Jacques Riviere • Alan L. Kirschner

Hunton & Williams • Amerigroup Community Care • Marsh • Lithonia Lighting
Paradowski Creative • New Market • Carlisle's Culinary Connection
Kemin International • American Printing Company



Rett Syndrome (RTT) is a genetic neurological disorder that occurs almost exclusively in girls. Rett Syndrome becomes apparent after 6-18 months of early normal development. It results in a regression that leads to lifelong handicaps including loss of speech, purposeful hand use and mobility.



IRSF
INTERNATIONAL
RETT SYNDROME
FOUNDATION